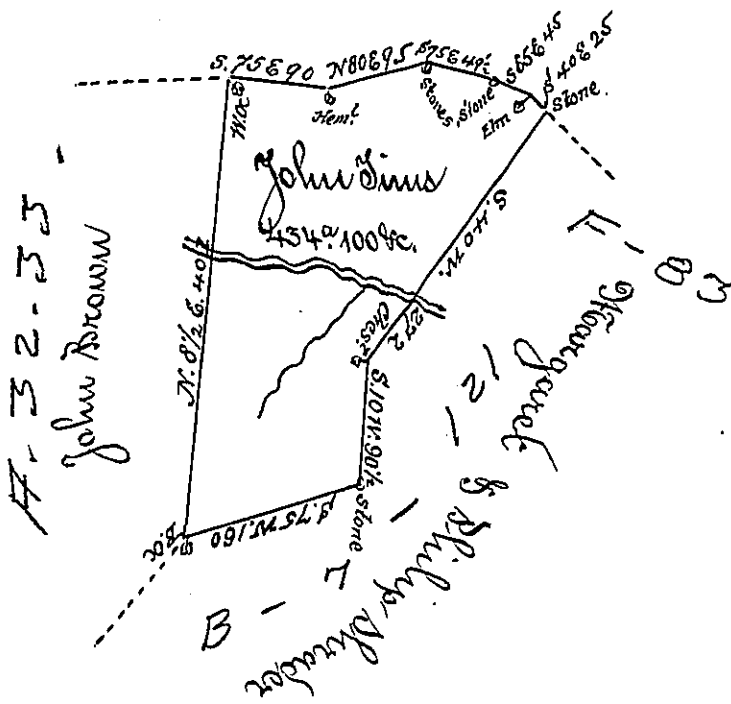


Foster -
Luzerne

C. 130. 172 -
Barto & others



By virtue of a Warrant Dated the 9th September 1794. Surveyed the 8th January, 1795. to John Sims the above described Tract of Land situate on a stream emptying into Lehi about 2 1/2 miles above the mouth of Quaker Creek on the West side of the Lehi in the County of Northampton containing Four hundred & thirty four Acres one hundred perches & the allowance of six per Cent

To Daniel Bradhead Esq. }
Survey^r General - }

F. Geo. Palmer D. S.

IN TESTIMONY that the above is a copy of the original remaining on file in the Department of Internal Affairs of Pennsylvania, made conformably to an Act of Assembly approved the 16th day of February, 1833, I have hereunto set my Hand and caused the Seal of said Department to be affixed at Harrisburg, this sixth day of August 1901.

James W. Pitta
Secretary of Internal Affairs.